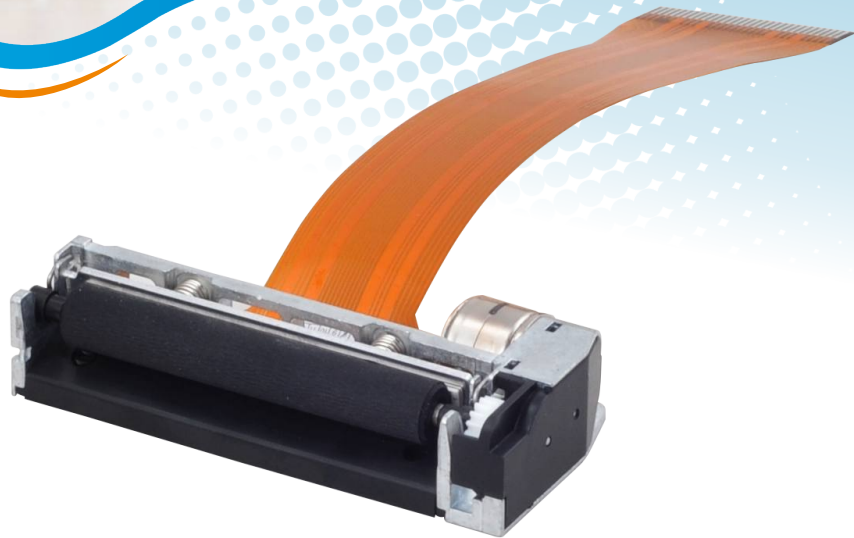




HEP-503-Z1

- Structural stability, Durable
- Small size & easy assembly
- Stable feeding & clear printing
- High quality & low repair rate



MODEL	HEP-503-Z1
Printing method	Direct Thermal
Effective print width	48 mm
Dot density	8 dot/mm
Print dots per line	384 dot
Print head average resistance	176 $\Omega \pm 4\%$
Paper width	58 mm
Dot Pitch	0.125 mm
Dot size	0.125*0.125 mm
Max print speed	80 mm/s
Pulse life / mechanical life	1*10 ⁸ pulse/150Km
Print head temperature detection	Thermistor
Paper out detection	Reflected light sensor
Rubber roller fixing method	Detachable body for easy loading
Print head operation voltage	4-8.5 VDC
Logic working voltage	2.7-5.25 VDC
Motor working voltage	5 VDC
Working machinery noise	60 Db (max)
Paper entry and exit method	Top paper exit
Paper cutting method	Manual paper tearing
Operating temperature	5°C-40°C
Working humidity	-20°C-70°C
Weight	41.5g
Dimensions	L=69.2mm,W=33mm,H=15.5mm±0.5mm



Scan QR code to checkout Xprinter website for more update information.
Phone: (+86 756) 3895 852
[Http://www.xprintertech.com](http://www.xprintertech.com)
Email: overseas@xprinter.net

